

Increasing Access to Underserved Communities

Manna Teclemariam, MPH

Founder/CEO, African Community Health Institute

Disclosures

All presenters of this continuing medical education activity have indicated that neither they nor their spouse/legally recognized domestic partner has any financial relationships with commercial interests related to the content of this activity.

Manna Teclemariam



Manna Teclemariam, MPH, is the Founder/CEO of African Community Health Institute (ACHI). She has received much recognition for over 25 years for leading culturally competent public health services and working with underserved communities. She has over 30 years of public health community experience in pioneering innovative behavioral approaches and designing public health programs. She received the Women's Policy Distinct Woman of the Year Award in 2007.

Moments of Silence



Moments of Silence



Content Outline

- **Current state of science**
- **Community dynamics**
- **Progress indicators**
- **Percentage, rate and proportions**
- **Numbers, figures and facts**
- **Service providers state of Practice**
- **Evidence based practice**
- **Solution oriented approaches**
- **Adapting and transforming the culture**

Learning Objectives

At the completion of this presentation, participants will be able to:

- Identify the basics of stigma, layers of stigma and barriers associated with health care services
- Determine the effects of stigma in the health and well-being of underserved communities
- Review misconceptions and challenges related to HIV prevention
- Develop a critical thinking on how to design an effective HIV prevention programs and implement cultural appropriate activities

Polling Question #1 (live webcast only)

What is the percentage of Black/African American population in the United States?

(choose one answer)

- A. Greater than 60 %*
- B. 45 - 60%*
- C. 30 - 44%*
- D. 15 -29%*
- E. Less than 15%*

Polling Question #2 (live webcast only)

What is the percentage of Black/African American population in California?

(choose one answer)

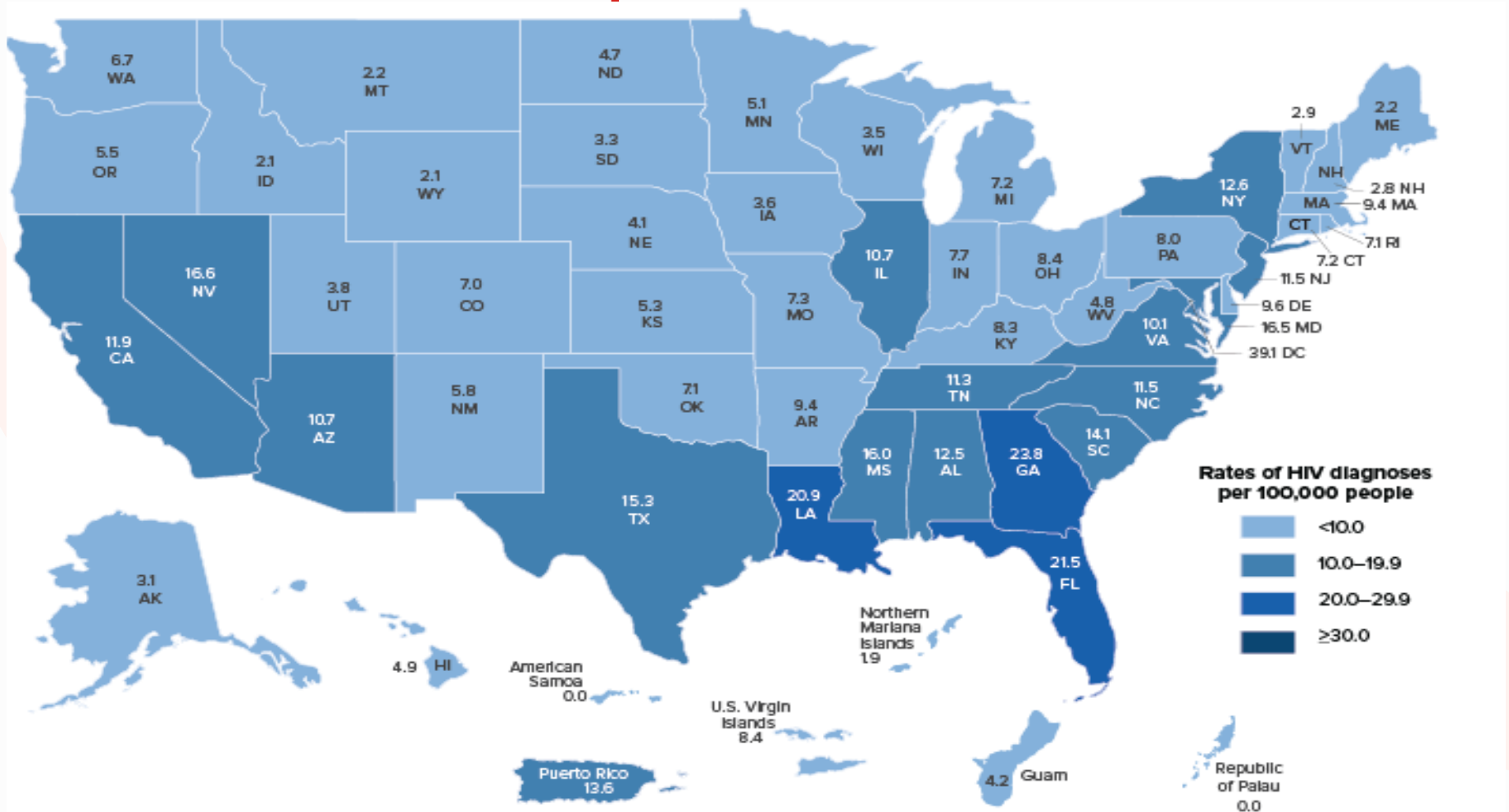
- A. Greater than 40 %*
- B. 30 - 40%*
- C. 20 - 29%*
- D. 10 - 19%*
- E. Less than 10%*

Polling Question #3 (live webcast only)

What is the percentage of Black/African American population in Santa Clara County, California? *(choose one answer)*

- A. Greater than 20 %*
- B. 15 - 20%*
- C. 10 - 14%*
- D. 5 -9%*
- E. Less than 5%*

HIV National Epidemic



Data source: CDC. Diagnosis of HIV infection in the United States, and dependent areas 2018. HIV Surveillance Report 2020;31.

HIV and Black/African American

The Numbers

HIV Diagnoses

OF THE 37,832 NEW HIV DIAGNOSES IN THE US AND DEPENDENT AREAS IN 2018:

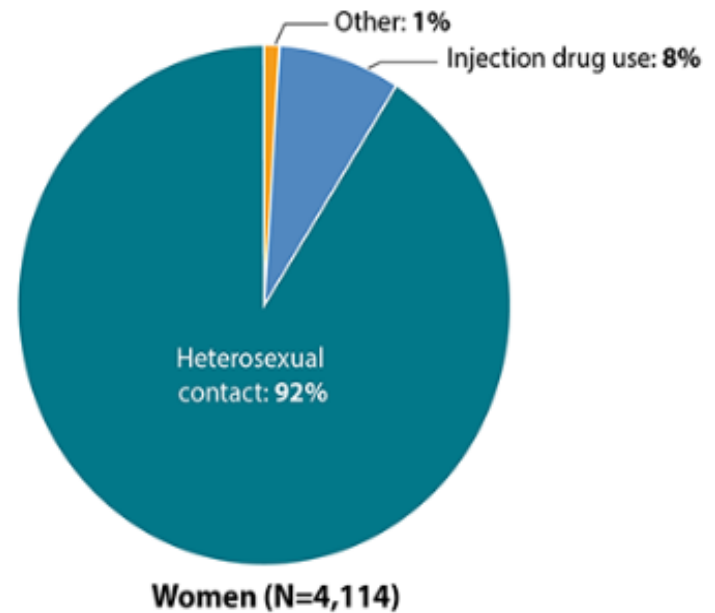
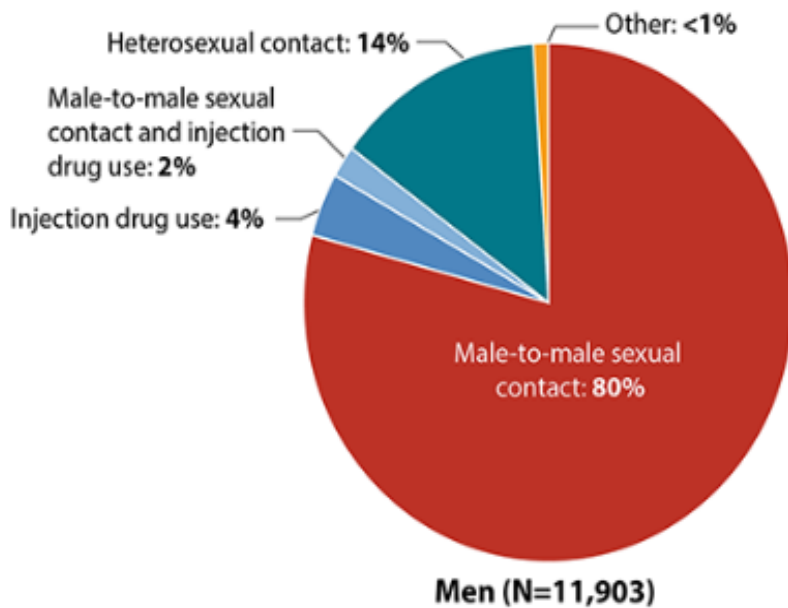
42% WERE AMONG ADULT
AND ADOLESCENT BLACKS/
AFRICAN AMERICANS

31% WERE AMONG BLACK/
AFRICAN AMERICAN MEN

11% WERE AMONG BLACK/
AFRICAN AMERICAN WOMEN

HIV Diagnosis by Transmission Category and Sex

- New HIV diagnosis among Black/African Americans



- Source: CDC. [Diagnoses of HIV infection in the United States and dependent areas, 2018 \(Preliminary\)](#)

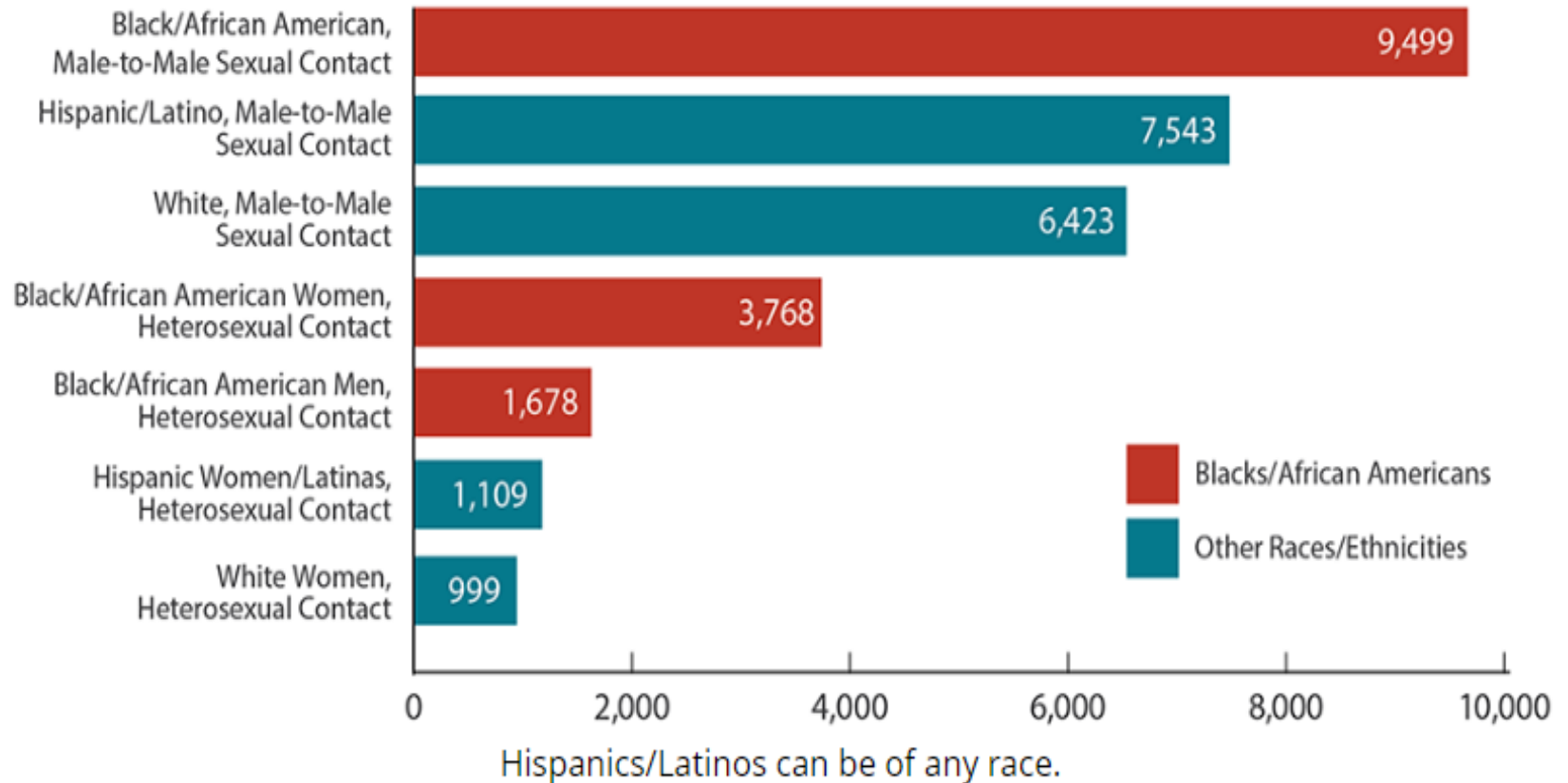
HIV Diagnosis by Race and year

Table 1a. Diagnoses of HIV infection, by year of diagnosis and selected characteristics, 2013–2018—United States

	2013		2014		2015		2016		2017		2018	
	No.	Rate ^a	No.	Rate ^a	No.	Rate ^a	No.	Rate ^a	No.	Rate ^a	No.	Rate ^a
Age at diagnosis (yr)												
<13	184	0.3	181	0.3	143	0.3	127	0.2	103	0.2	91	0.2
13–14	40	0.5	32	0.4	25	0.3	26	0.3	28	0.3	19	0.2
15–19	1,693	8.0	1,730	8.2	1,757	8.3	1,703	8.1	1,763	8.4	1,688	8.0
20–24	7,026	30.8	7,363	32.2	7,279	32.1	6,911	30.9	6,454	29.2	6,027	27.6
25–29	6,634	30.8	7,193	32.8	7,584	33.8	7,949	34.7	7,709	33.0	7,653	32.5
30–34	5,187	24.4	5,430	25.2	5,455	25.2	5,643	25.9	5,637	25.7	5,669	25.6
35–39	3,950	20.1	4,223	21.2	4,256	20.9	4,239	20.4	4,274	20.2	4,186	19.4
40–44	3,923	18.8	3,778	18.4	3,407	16.9	3,264	16.6	2,971	15.2	2,972	15.1
45–49	3,905	18.4	3,610	17.3	3,313	15.9	3,090	14.8	2,945	14.1	2,831	13.6
50–54	2,950	13.1	2,886	12.8	2,997	13.5	2,878	13.2	2,649	12.4	2,451	11.7
55–59	2,000	9.4	1,920	8.9	1,876	8.6	1,883	8.6	1,862	8.5	1,872	8.5
60–64	1,066	5.9	968	5.2	997	5.2	1,080	5.5	1,075	5.4	1,038	5.1
≥65	856	1.9	830	1.8	850	1.8	854	1.7	859	1.7	880	1.7
Race/ethnicity												
American Indian/Alaska Native	144	6.2	178	7.6	185	7.8	222	9.3	212	8.8	189	7.8
Asian	788	4.9	905	5.4	925	5.4	960	5.4	936	5.1	874	4.7
Black/African American	17,050	43.6	17,314	43.8	17,270	43.3	17,110	42.5	16,491	40.6	16,067	39.3
Hispanic/Latino ^b	9,077	16.8	9,651	17.5	9,756	17.3	9,990	17.4	9,716	16.5	9,673	16.2
Native Hawaiian/Other Pacific Islander	45	8.4	43	7.9	72	13.0	41	7.2	54	9.4	69	11.8
White	10,484	5.3	10,451	5.3	10,275	5.2	10,009	5.1	9,822	5.0	9,620	4.9
Multiple races	1,826	29.5	1,602	25.1	1,456	22.2	1,315	19.5	1,098	15.8	885	12.4

Source: CDC. [Diagnoses of HIV infection in the United States and dependent areas, 2018 \(Preliminary\)](#)

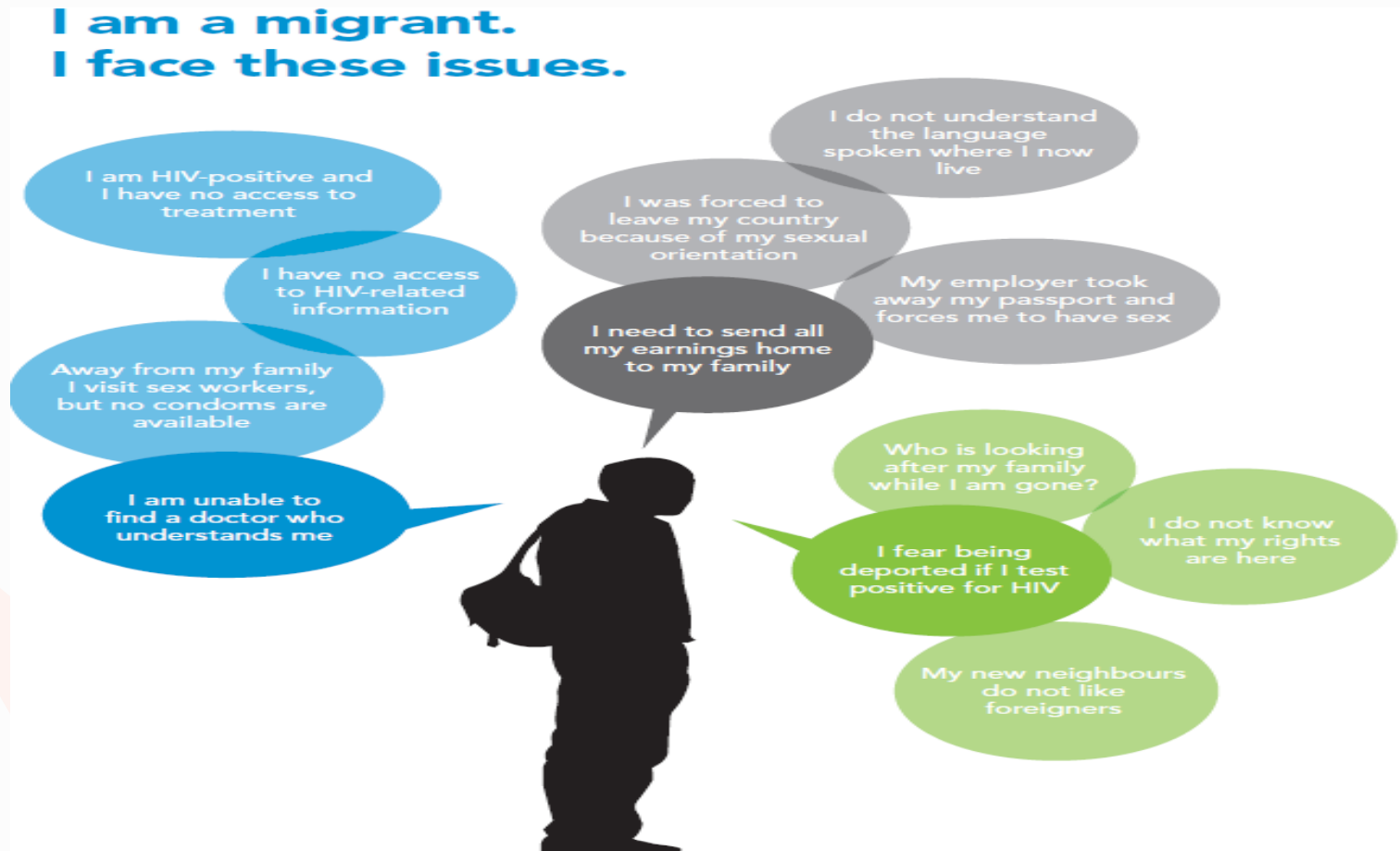
HIV Diagnosis by Sub-populations



Source: CDC. [Diagnoses of HIV infection in the United States and dependent areas, 2018 \(Preliminary\)](#)

- Source: CDC. [Diagnoses of HIV infection in the United States and dependent areas, 2018 \(Preliminary\)](#)

HIV Epidemic in Migration Context



Underserved Communities

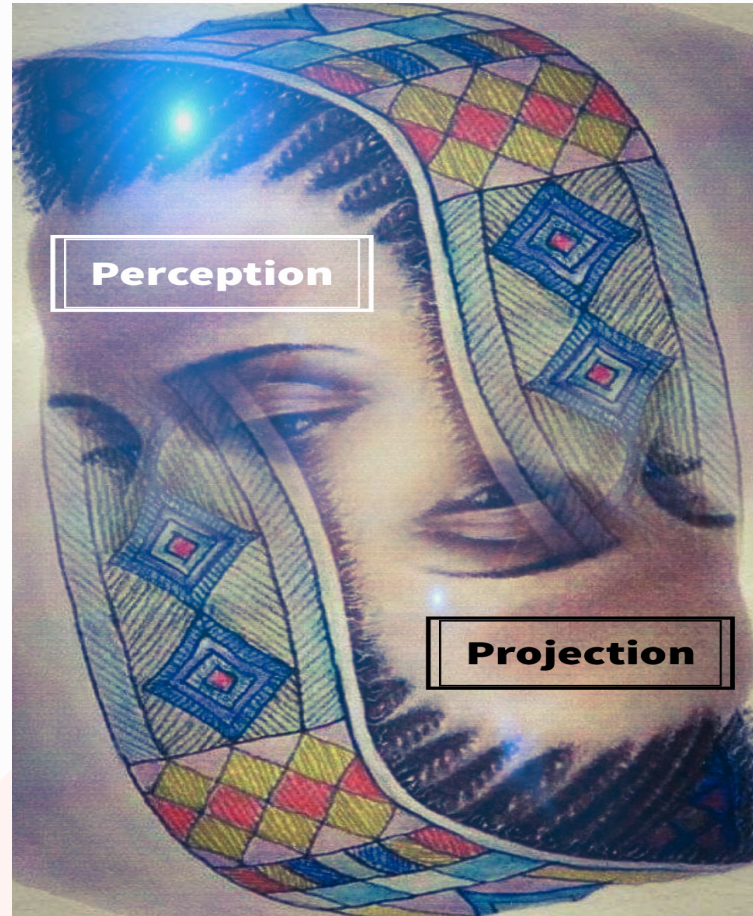
- Culture
- Norms
- Barriers
- Public Health Services



Underserved Communities

Veils of Behavior

- Perception
- Projection
- Community
- Service Providers

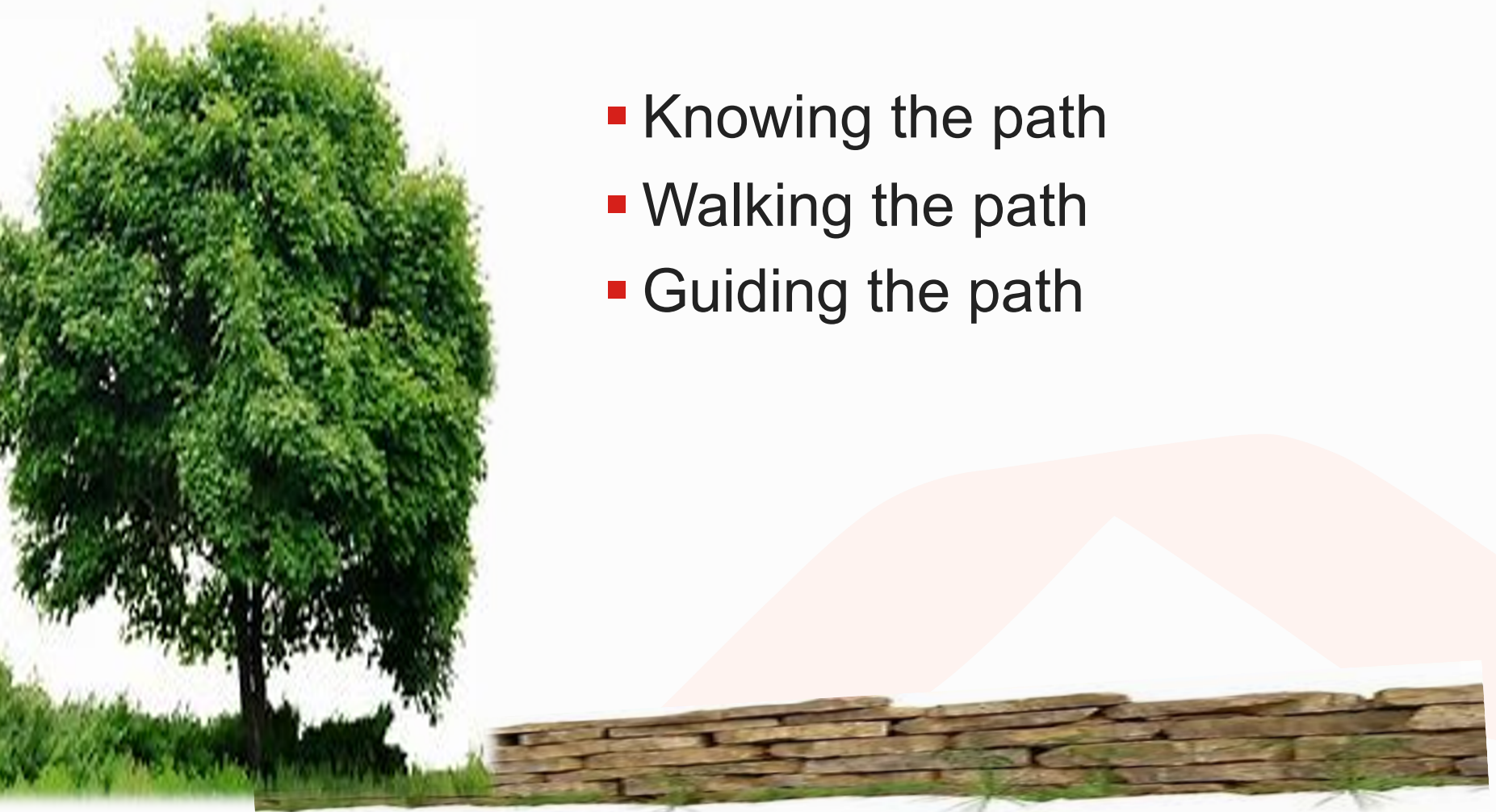


HIV Prevention Challenges

- Inadequate sex education
- Stigma and trauma around HIV
- Homophobia/transphobia
- Low condom use
- Low testing rates and access
- Substance use, isolation and stress
- High rates of STIs

HIV Prevention Framework

- Knowing the path
- Walking the path
- Guiding the path

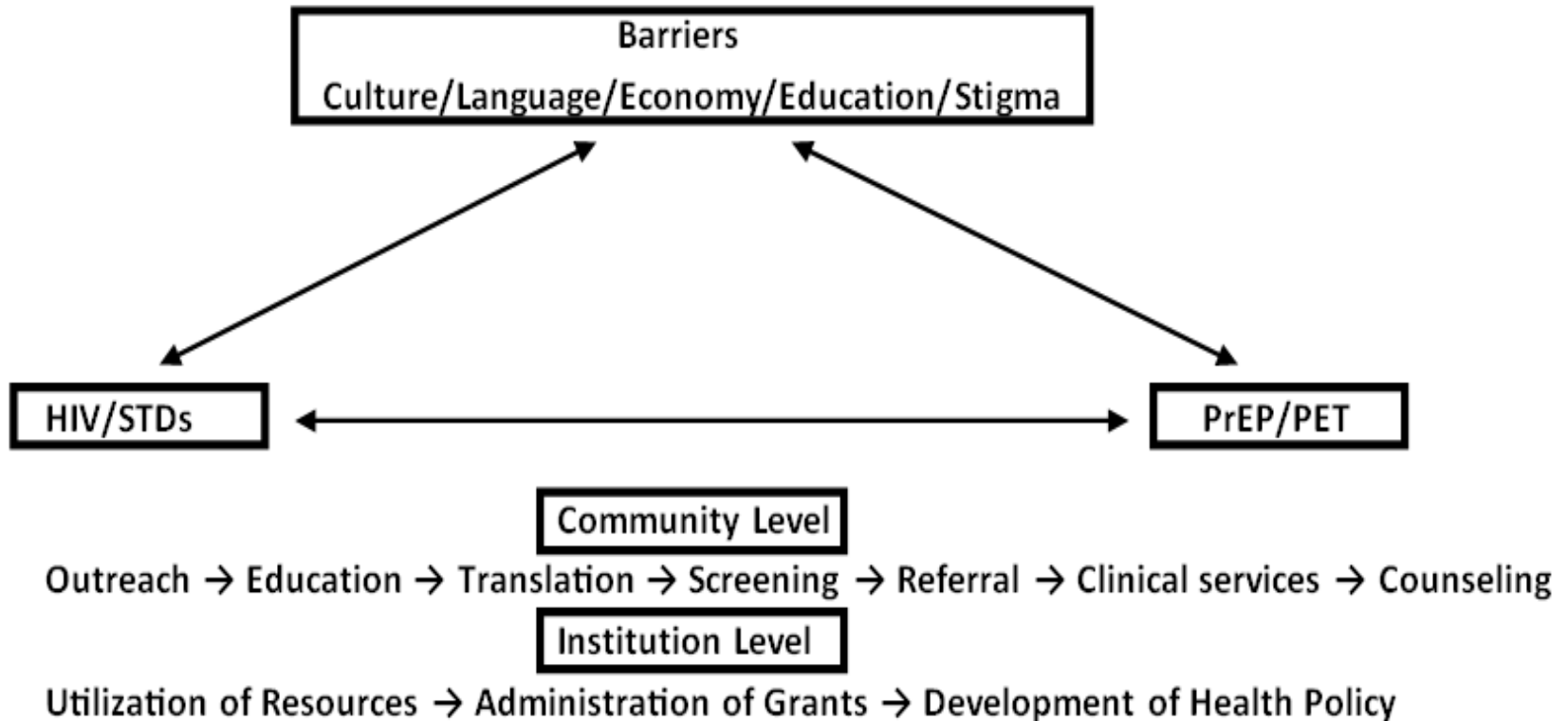


Stigma Reduction and Prevention

“Blue Print”

- Understanding HIV epidemic and health disparities of underserved communities.
- Exploring cultural differences and communication gaps.
- Identifying the intersections of HIV/AIDS stigma (Gender, Race/Ethnicity, Sexual Orientation, Religion, Behavior ,Geography).
- Addressing health care service barriers of Black/African American community.
- Empowering women and reducing health risk of vulnerable groups of the target population.

ACHI Behavioral Approaches



ACHI Behavioral Innovative Model

“The Nine Steps”

- Education
- Community outreach
- Cultural competent programs
- Community empowerment
- Screening
- Referrals
- Clinical testing
- Counseling and support services (ART treatments, PrEP/PET and condom usage)
- Evaluation

ACHI + Roots

Community Health Center Partnership

- The voice of community service providers through the lens of community members
- Short Journey from ACHI to Roots clinic
 - Virtually 3 minutes
 - Physically 3.3 miles
- Service Providers Testimony

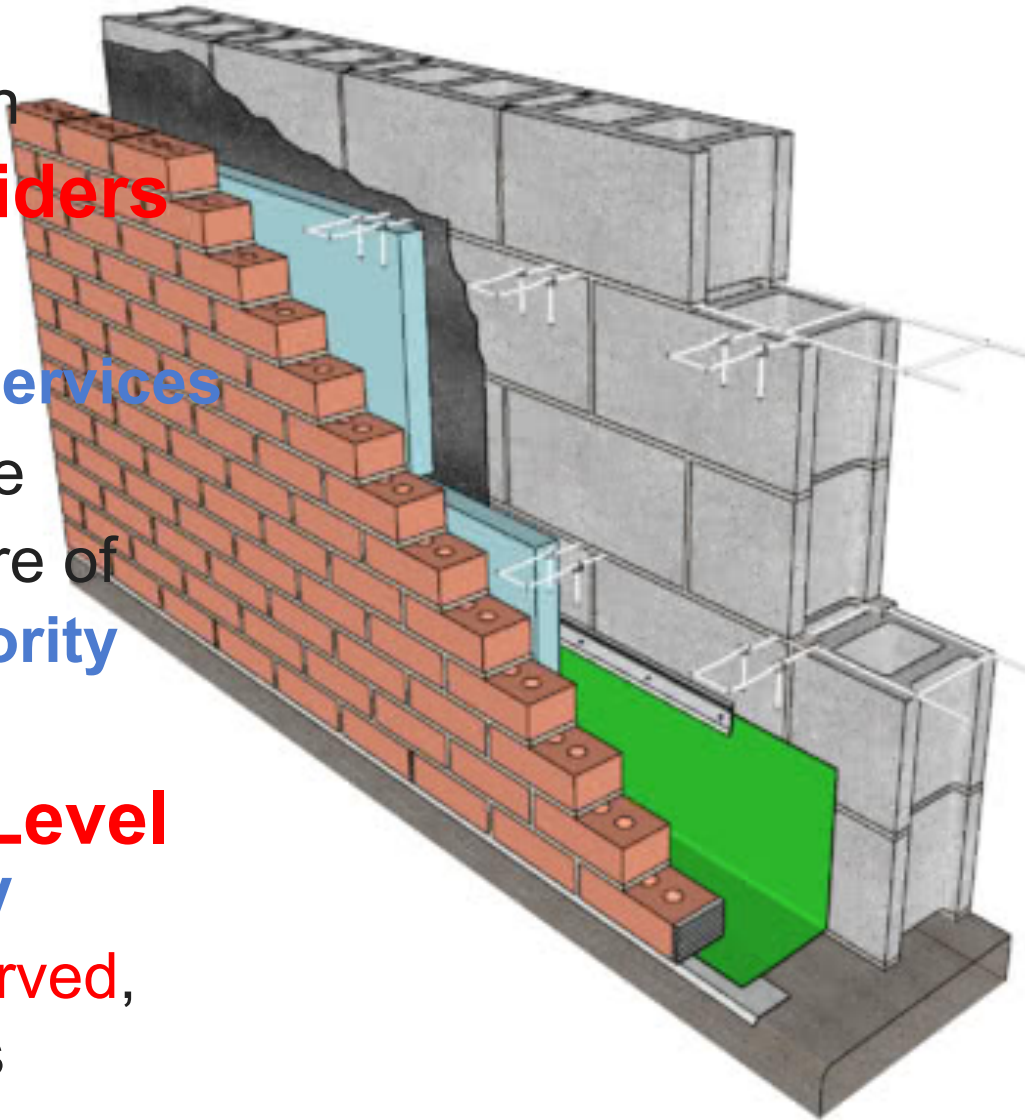
https://www.youtube.com/watch?v=s-IZy_GUGPw

Roots Clinic

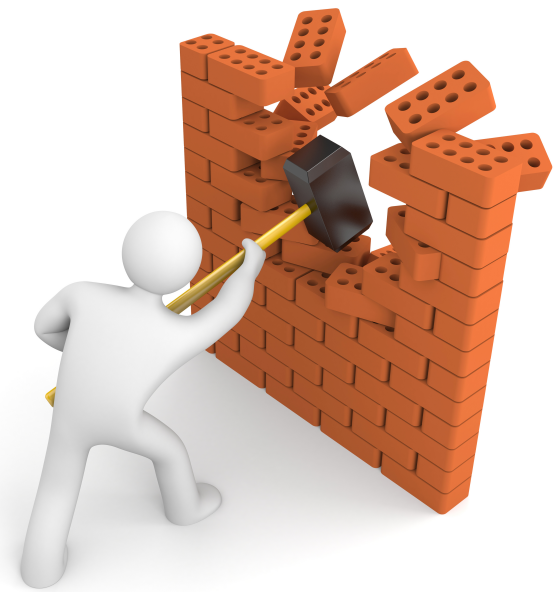
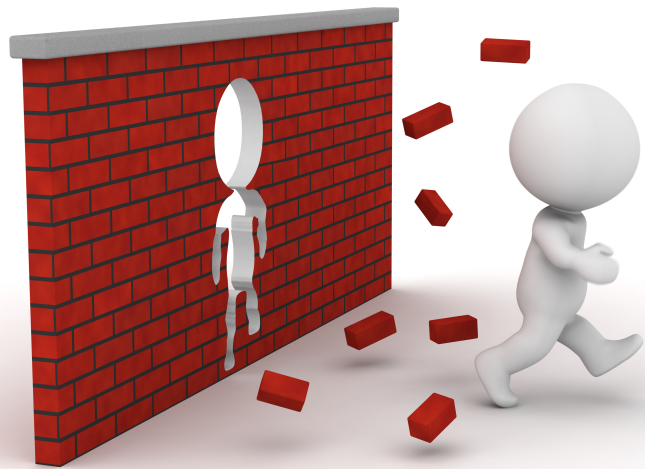


Summary

- Building **Trust** between **Clients** and **Care Providers**
- Expanding **Culturally competent** public health **Services**
- Raising **Awareness** on the **Disproportionate** nature of HIV infections among **Minority** communities
- Adopting **Community-Level approaches** to reduce **HIV Infection** in **small/underserved**, but **High-risk** communities



Q&A Session #1



Q&A Session #2



References

- Department of Health and Human Services, Centers for Disease Control and Prevention. HIV in the United States and dependent areas. <https://www.cdc.gov/hiv/statistics/overview/ataglance.html>. Updated January 15, 2020. Accessed October 26, 2020.
- *HIV Surveillance Report* 2019;30.
- Establishing a holistic framework to reduce inequities in HIV, viral hepatitis, STDs, and tuberculosis in the United States; an NCHHSTP white paper on social determinants of health, 2010. <https://stacks.cdc.gov/view/cdc/11585>.
- Division of HIV/AIDS Prevention, National Center for HIV/AIDS, Viral Hepatitis, STD, and TB Prevention, Centers for Disease Control and Prevention
- Mandsager P, Marier A, Cohen S, Fanning M, Hauck H, Cheever LW. Reducing HIV-related health disparities in the Health Resources and Services Administration's Ryan White HIV/AIDS Program. *Am J Public Health*. 2018;108(S4):S246-S250. doi:[10.2105/AJPH.2018.304689](https://doi.org/10.2105/AJPH.2018.304689)
- PrEP4All , NYC-based grassroots group of activists dedicated to increasing access to PrEP as an essential component of the biomedical model for HIV prevention.
- Giler RM et al., "Changes in Truvada (TVD) for HIV pre-exposure prophylaxis (PrEP) utilization in the United States:(2012-2016)"
- Siegler AG et al., "The prevalence of pre-exposure prophylaxis use and the pre-exposure prophylaxis-to-need ratio in the fourth quarter of 2017, United States." *Ann Epidemiol*.2018 Jun 15. pii: S1047-2797